

■ Features :

- Universal AC input / Full range
- Protections:Short circuit/Over load/Over voltage
- Battery low protections
- Cooling by free air convection
- 100% full load burn-in test
- Fixed switching frequency at 45KHz
- 2 years warranty

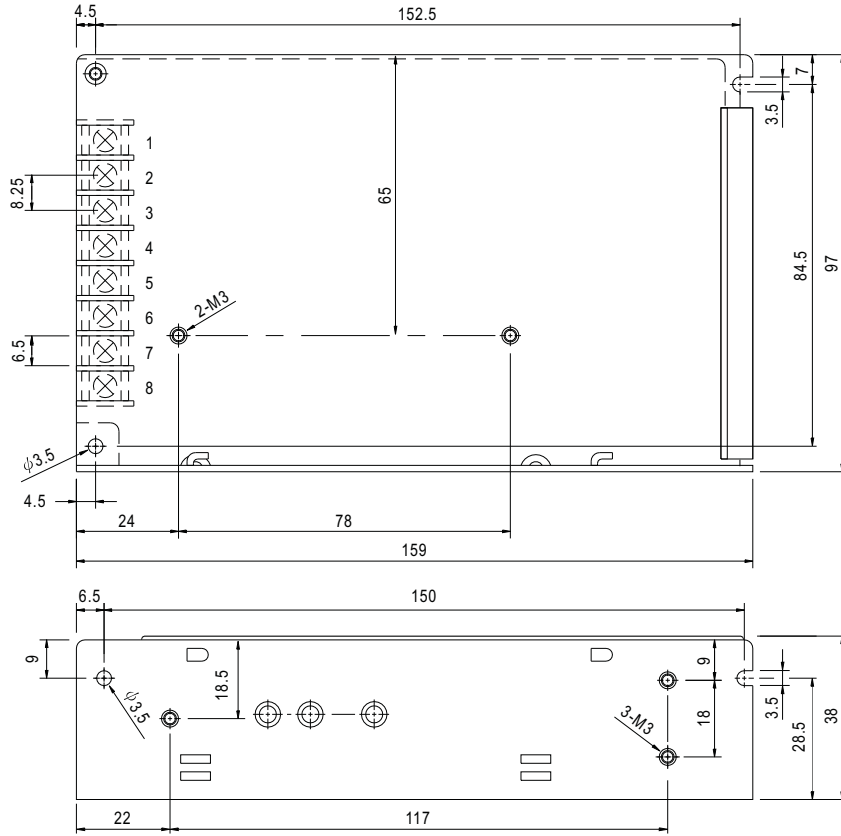


SPECIFICATION

| MODEL | | ADS-5512 | | ADS-5524 | |
|------------------------|---|---|--------|--|--------|
| OUTPUT | OUTPUT NUMBER | CH1 | CH2 | CH1 | CH2 |
| | DC VOLTAGE | 12V | 5V | 24V | 5V |
| | RATED CURRENT | 3A | 3A | 2A | 2A |
| | CURRENT RANGE | 0 ~ 4A | 0 ~ 4A | 0 ~ 2.5A | 0 ~ 4A |
| | RATED POWER | 51W | | 58W | |
| | RIPPLE & NOISE (max.) Note.2 | 100mVp-p | | 100mVp-p | |
| | VOLTAGE ADJ. RANGE | CH1:10.8 ~ 13.2V | | CH1:21.6 ~ 26.4V | |
| | VOLTAGE TOLERANCE Note.3 | ±1.0% | ±3.0% | ±1.0% | ±3.0% |
| | LINE REGULATION | ±0.5% | ±0.5% | ±1.0% | ±0.5% |
| | LOAD REGULATION | ±0.5% | ±0.5% | ±1.0% | ±0.5% |
| SETUP, RISE, HOLD TIME | 800ms, 50ms, 60ms/230VAC 1600ms, 50ms, 16ms/115VAC at full load | | | | |
| INPUT | VOLTAGE RANGE | 88 ~ 264VAC 124 ~ 370VDC | | | |
| | FREQUENCY RANGE | 47 ~ 63Hz | | | |
| | EFFICIENCY (Typ.) | 74% | | 74% | |
| | AC CURRENT | 1.6A/115VAC 1A/230VAC | | | |
| | INRUSH CURRENT (max.) | COLD START 20A/115VAC 40A/230VAC | | | |
| | LEAKAGE CURRENT | <1mA / 240VAC | | | |
| PROTECTION | OVER LOAD | 105 ~ 150% rated output power Protection type : Hiccup mode, recovers automatically after fault condition is removed | | | |
| | OVER VOLTAGE | CH1:13.8 ~ 16.2V | | CH1:27.6 ~ 32.4V Protection type : Hiccup mode, recovers automatically after fault condition is removed | |
| ENVIRONMENT | WORKING TEMP. | -10 ~ +60°C (Refer to output load derating curve) | | | |
| | WORKING HUMIDITY | 20 ~ 90% RH non-condensing | | | |
| | STORAGE TEMP., HUMIDITY | -20 ~ +85°C, 10 ~ 95% RH | | | |
| | TEMP. COEFFICIENT | ±0.03%/°C (0~50°C) on CH1 output | | | |
| SAFETY & EMC (Note 4) | VIBRATION | 10 ~ 500Hz, 2G 10min./1cycle, 60min. each along X, Y, Z axes | | | |
| | SAFETY STANDARDS | UL60950-1, TUV EN60950-1 Approved | | | |
| | WITHSTAND VOLTAGE | I/P-O/P:3KVAC I/P-FG:1.5KVAC O/P-FG:0.5KVAC | | | |
| | ISOLATION RESISTANCE | I/P-O/P, I/P-FG, O/P-FG:100M Ohms/500VDC | | | |
| | EMI CONDUCTION & RADIATION | Compliance to EN55022 (CISPR22) Class B | | | |
| | HARMONIC CURRENT | Compliance to EN61000-3-2,-3 | | | |
| OTHERS | EMS IMMUNITY | Compliance to EN61000-4-2,3,4,5,6,8,11; ENV50204, EN55024,Light industry level, criteria A | | | |
| | MTBF | 276.3K hrs min. MIL-HDBK-217F (25°C) | | | |
| | DIMENSION | 159*97*38mm (L*W*H) | | | |
| | PACKING | 0.57Kg; 24pcs/13.7Kg/0.75CUFT | | | |
| NOTE | <ol style="list-style-type: none"> 1. All parameters NOT specially mentioned are measured at 230VAC input, rated load and 25°C of ambient temperature. 2. Ripple & noise are measured at 20MHz of bandwidth by using a 12" twisted pair-wire terminated with a 0.1uf & 47uf parallel capacitor. 3. Tolerance : includes set up tolerance, line regulation and load regulation. 4. The power supply is considered a component which will be installed into a final equipment. The final equipment must be re-confirmed that it still meets EMC directives. | | | | |

Mechanical Specification

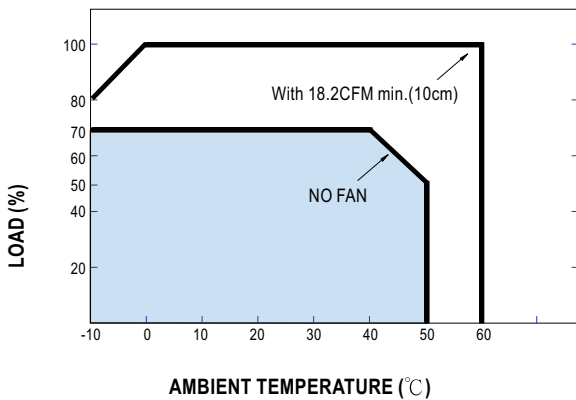
Case No. 901 Unit:mm



Terminal Pin. No Assignment

| Pin No. | Assignment | Pin No. | Assignment | Pin No. | Assignment |
|---------|------------|---------|---------------|---------|------------------|
| 1 | AC/L | 4 | DC OUTPUT COM | 7 | DC OUTPUT COM |
| 2 | AC/N | 5 | DC OUTPUT +V | 8 | DC/DC OUTPUT +5V |
| 3 | FG \perp | 6 | NC | | |

Derating Curve



Static Characteristics (5512)

