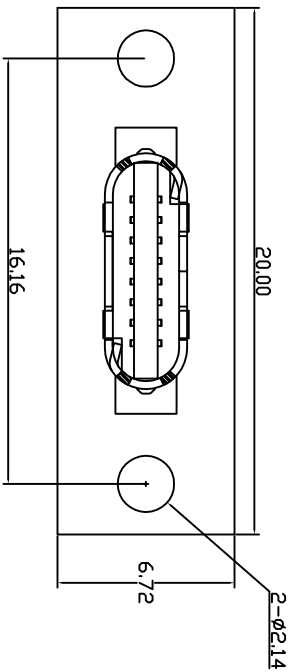
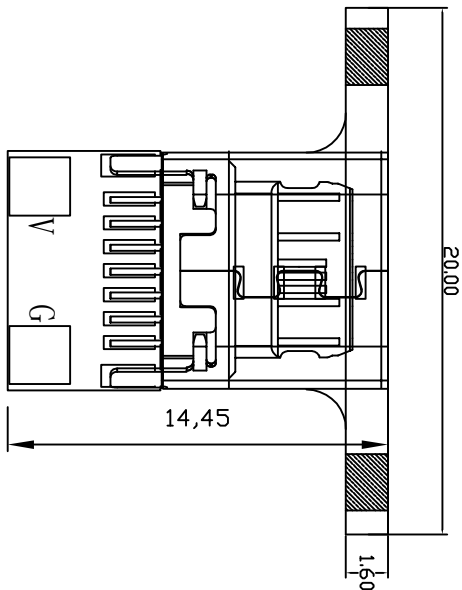
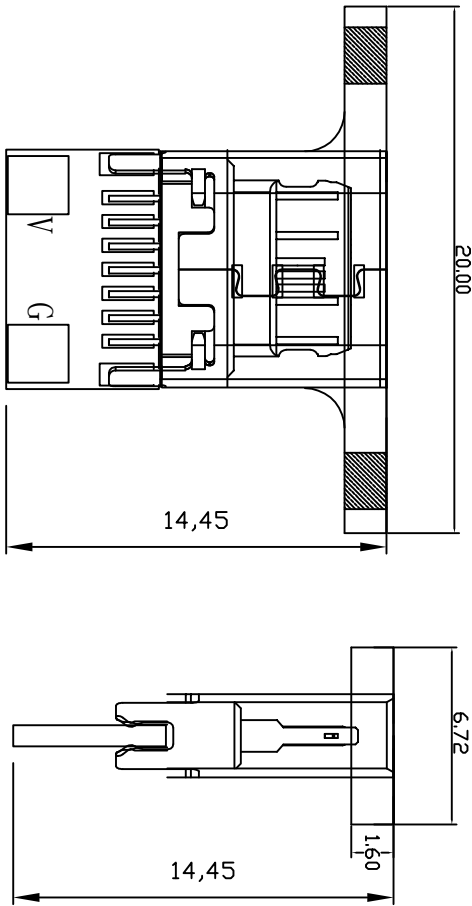


# ROHS 客户图



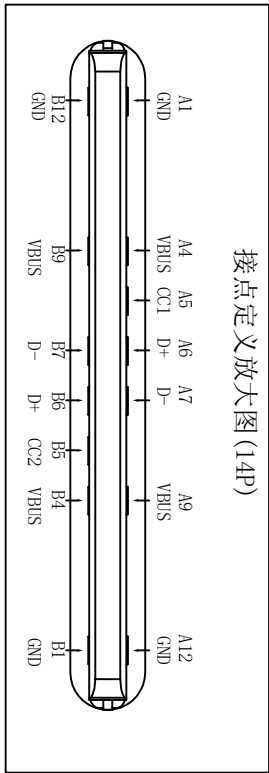
REV.	ECN	DESCRIPTION	MDF'D	DATE
A0		新订图面	Lee	2020.03.18

## 备注:

1. 电气测试:
    - 1.1 接触电阻: 30mΩ MAX, 寿命后变化±10mΩ
    - 1.2 耐压: 100V AC
    - 1.3 绝缘阻抗: 100MΩ MIN
    - 1.4 额定电流 3A
  2. 机械测试
  - 2.1 耐久测试: 10000次;
  - 2.2 插入力: 5~20N ;
  - 2.3 拔出力: 8~20N ;
3. 包装:
    - 3.1 PE袋包装, 最小包装量60PCS
  4. 环境
    - 4.1 工作温度: -35°C~+88°C

焊盘	V	G
针位	A4 A9 B4 B9	A1 A12 B1 B12
备注	A6 A7 B6 B7短路	

接点定义放大图 (14P)



品名 (ITEM NO)	TYPE-CAP带固定板母座	页码 (SHEET)	1/1	比例 (SCALE)	1:1
图号 (DWG NO)	CYX-H145P2B	单位 (UNIT)	mm	设计 (DESIGN)	LKH
		审核 (CHECKED)	TYJ	公差 (TOLERANCE UNSPECIFIED)	未注公差
		核准 (APPROVED)			.0 ±0.30 0.~.10 .00 ±0.20 0.~.8 .000 ±0.10 0.0 ±.5

These drawings and specifications are owned by CHUANGYIXIN Electronics (Shenzhen) Co., LTD., and shall not be copied. It may not be reproduced or used in any way without the prior written consent of our company.