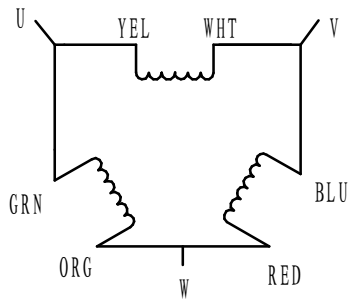


HIGH TORQUE HYBRID STEPPING MOTOR SPECIFICATIONS

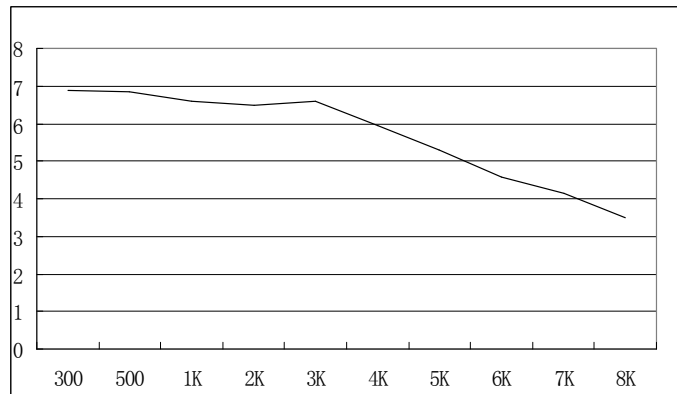
General specifications		Electrical specifications	
Step Angle (°)	1.2	Rated Voltage (V)	20.25
Temperature Rise (°C)	80 Max (rated current, 2 phase on)	Rated Current (A)	2.25
Ambient Temperature (°C)	-20 ~ +50	Resistance Per Phase ($\pm 10\%$ Ω)	9.0
Number of Phase	3	Inductance Per Phase ($\pm 20\%$ mH)	41
Insulation Resistance (M Ω)	100 Min (500VDC)	Holding Torque (N.cm)	678
Insulation Class	Class B		
Max. radial force (N)	220 (20mm from the flange)		
Max. axial force (N)	80		

● Wiring Diagram :



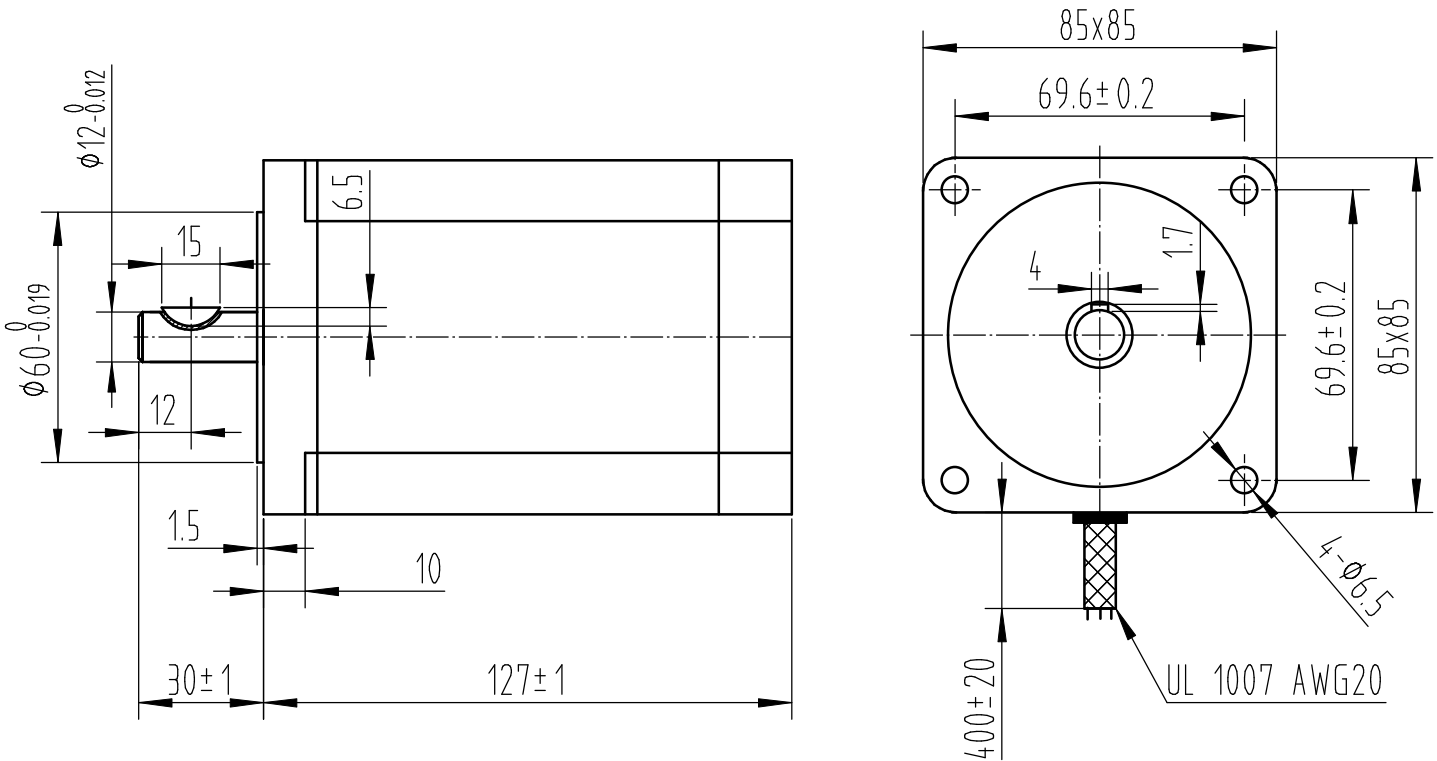
● PULL out torque curve :

VOLTAGE: 110VAC CONSTANT CURRENT : 2.3A 0.36°



● Dimensions:

(unit=mm)



					SY853P127-2256A	TECHNICAL CONDITIONS
REV	REVISIONS	DESCRIPTION	BY	DATE	CHANGZHOU SONGYANG MACHINERY & ELECTRONICS NEW TECHNIC INSTITUTE	120127000
DRAW	2013/05/06					
CHECK						
APPROVE						

This document was created with Win2PDF available at <http://www.win2pdf.com>.
The unregistered version of Win2PDF is for evaluation or non-commercial use only.
This page will not be added after purchasing Win2PDF.