



Ordering number C10924
Description C10924-Strada-B-XR

Family	Strada-B	FWHM	84+36 degrees
Type	Lens	Efficiency	93 %
LED	XR-E	cd/lm	1.020
Color	Transparent	Gerber File	Available
Diameter	19.6 + 15.5 mm		
Height	8.2 mm		
Style	Rectangular		
Optic Material	PMMA		
Holder Material	-		
Fastening	Screw, glue		
Status	Ready		

Ordering number CA10925
Description CA10925-Strada-B-XR-tape

Family	Strada-B	FWHM	84+36 degrees
Type	Lens	Efficiency	93 %
LED	XR-E	cd/lm	1.020
Color	Transparent	Gerber File	Available
Diameter	19.6 + 15.5 mm		
Height	8.35 mm		
Style	Rectangular		
Optic Material	PMMA		
Holder Material	-		
Fastening	Screw, tape		
Status	Ready		



PRODUCT DATASHEET
Strada-B series
last update 20/2/2012



NOTE: The typical divergence will be changed by different color, chip size and chip position tolerance. The typical total divergence is the full angle measured where the luminous intensity is half of the peak value.



PRODUCT DATASHEET Strada-B series

last update 20/2/2012



GENERAL INFORMATION

- Product series especially designed & optimized for XR-E series of LEDs.
- Special care taken to make light distribution as uniform as possible.
- Fastening to heat sink with a PU foam adhesive tape of automotive grade. Please find fastening details by clicking link: http://www.ledil.com/datasheets/DataSheet_TAPE.pdf
- Fastening to PCB with appropriate adhesive. By clicking link below you can find Ledil recommended glue options.
http://www.ledil.com/datasheets/DataSheet_GLUES.pdf

NOTE 1: We advise customer to ensure the suitability and sufficiency of the bond in the end product. For example, mechanical stress, vibration and holes on the surface of the circuit board weaken the strength of the tape.

NOTE 2: Assembly to the surface must be made straight, so the tape bonds constant and balanced with fastening surface. Slanted assembly might cause unbalanced bond to the surface. All surfaces where tape is applied must be clean, dry and free from grease and dirt.

If cleaning of PCB surfaces is needed, please follow strictly the cleaning instructions of your LED manufacturer - this is important as cleaning shall under no circumstances damage LEDs or other electronics components on the PCB.

Further note that optical components shall not be cleaned with any chemicals - only micro fiber cloth may be used to remove fingerprints or other traces from handling.

NOTE 1: We advise customer to ensure the suitability and sufficiency of the bond in the end product. For example, mechanical stress, vibration and holes on the surface of the circuit board weaken the strength of the glue.

NOTE 2: All surfaces where glue is applied must be clean, dry and free from grease and dirt. If cleaning of PCB surfaces is needed, please follow strictly the cleaning instructions of your LED manufacturer -this is important as cleaning shall under no circumstances damage LEDs or other electronics components on the PCB.

Further note that optical components shall not be cleaned with any chemicals - only micro fiber cloth may be used to remove fingerprints or other traces from handling.

D

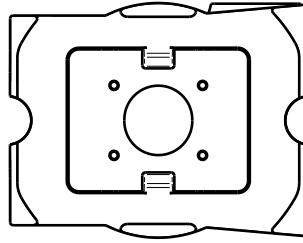
C

B

A

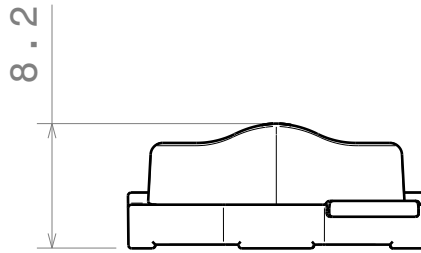
4

4



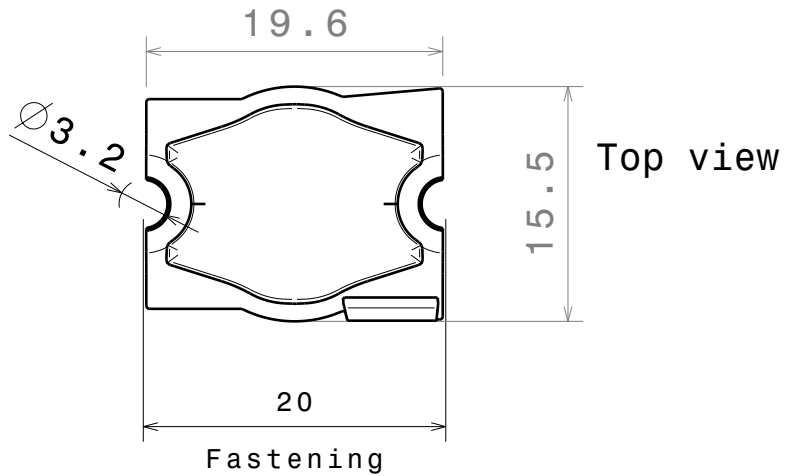
3

3



2

2



MATERIAL PMMA

This drawing is our property.
It can't be reproduced
or communicated without
our written agreement.



L
T
F
F

e
e
i
i
N
n

d

h

DRAWING TITLE

Datasheet Strada-B-XR lens

DRAWN BY

DATE

13.08.2009

CHECKED BY

DATE

26.04.2009

DESIGNED BY

DATE

26.04.2009

SIZE

A4

DRAWING NUMBER

C10924

REV

0.1

SCALE

2:1

WEIGHT (g)

SHEET

1/1

D

A

1

1