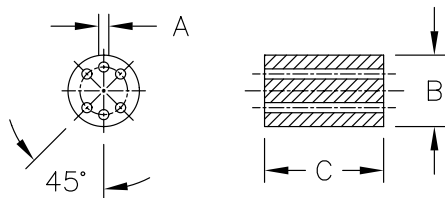


ELECTRONIC COMPONENT ACCESSORIES

RRH6 Series Wound Beads



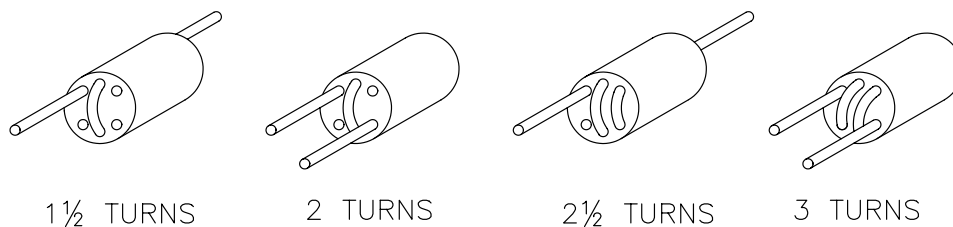
Features

- Six hole beads are available wound with tinned copper wire in several winding configurations as shown below
- Wire used for winding is oxygen free high conductivity with tin plating

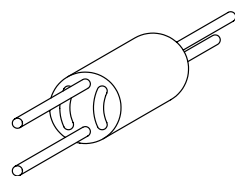
For performance and mechanical data on these parts please ask for our "Ferrite Typical Data Sheet."

Material: A6; K10; K5B • Color: Gray							
Part No.	No. of Turns	Dimensions			Impedance (Ω) for A6 Material		Standard Pack per Bag
		"A"	"B"	"C"	25 Mhz	100 Mhz	
RRH6-1-15	1 - 1/2	.236 (6.0 mm)	.033 (0.85mm)	.394 (10.0 mm)	300 Ohms	400 Ohms	500
RRH6-1-20	2	.236 (6.0 mm)	.033 (0.85mm)	.394 (10.0 mm)	450 Ohms	530 Ohms	500
RRH6-1-25	2 - 1/2	.236 (6.0 mm)	.033 (0.85mm)	.394 (10.0 mm)	620 Ohms	600 Ohms	500
RRH6-1-30	3	.236 (6.0 mm)	.033 (0.85mm)	.394 (10.0 mm)	750 Ohms	620 Ohms	500
RRH6-2-15	2*1.5	.236 (6.0 mm)	.033 (0.85mm)	.394 (10.0 mm)	280 Ohms	390 Ohms	500

Impedance figures are typical values.



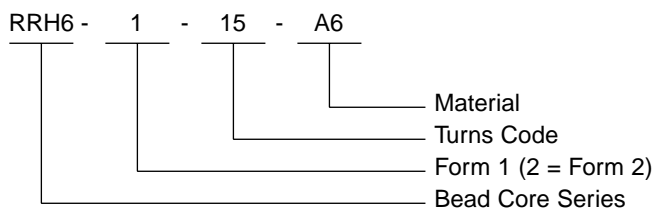
FORM 1



2*1 1/2 TURNS

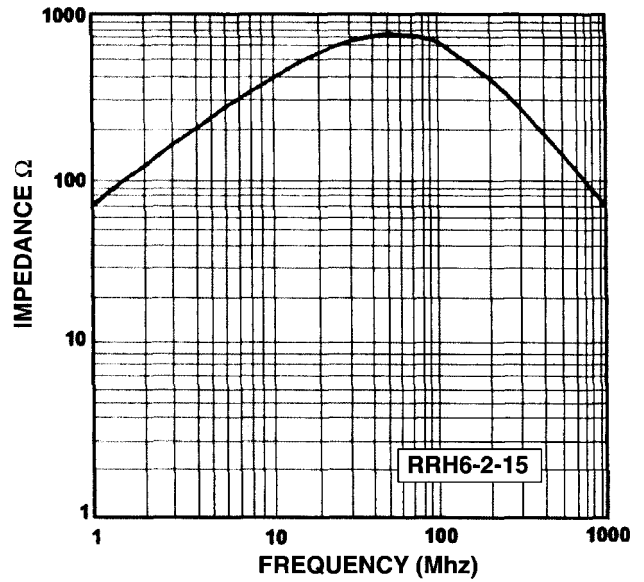
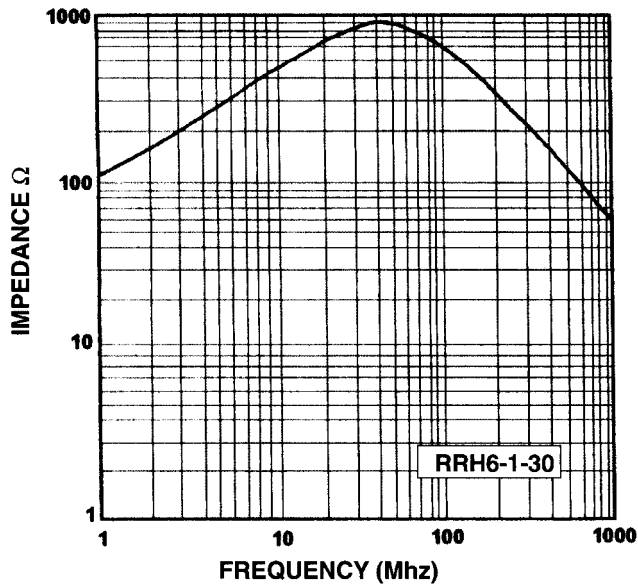
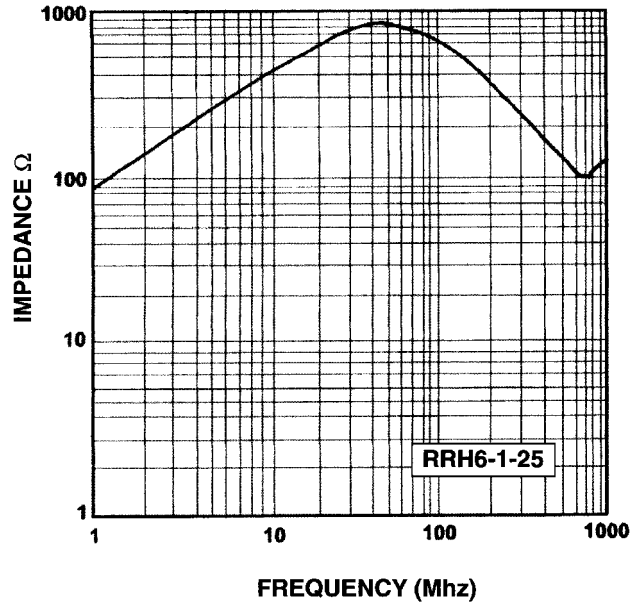
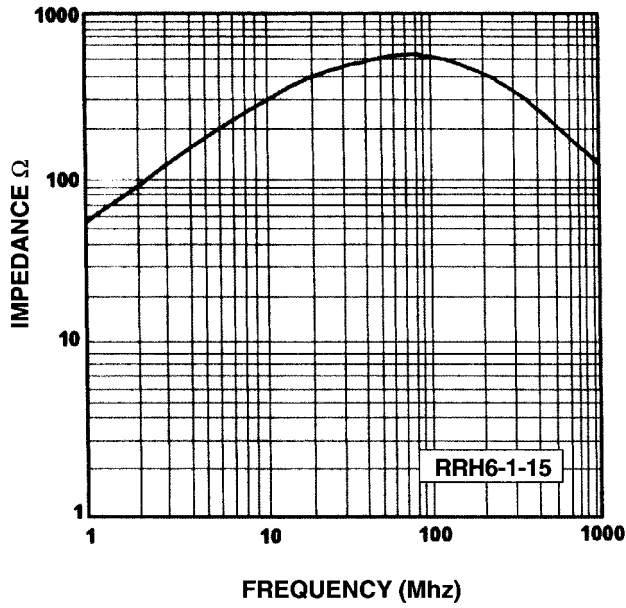
FORM 2

PART NUMBER CODE EXAMPLE



ELECTRONIC COMPONENT ACCESSORIES

RRH6 Series (cont.) Wound Beads



G