

Low-cost development platform for 32-bit LPC microcontroller family

This low-cost development tool platform, available directly from NXP, provides a quick way to develop advanced applications using NXP's highly efficient and low-power LPC microcontrollers. It includes everything to take end users from evaluation to final production.

LPCXpresso features

- ▶ Low-cost development tool platform for LPC MCUs
- ▶ Eclipse-based IDE
- ▶ Low-cost target board
- ▶ Integrated debug probe (separate debug probe not required)
- ▶ End-to-end solution supports evaluation to production
- ▶ Free Edition supports code sizes up to 256 KB after activation and can be upgraded to unlimited code size by purchasing a Pro Edition license
- ▶ Supports C++ application and library projects
- ▶ Red State state machine editor and code generator supports software state machines, plus state machines for the State Configurable Timer (SCT) peripheral

LPCXpresso IDE

Designed for simplicity and ease of use, the LPCXpresso IDE is a highly-integrated software development environment for NXP's LPC microcontrollers. It includes all the tools necessary

to develop high-quality software solutions in less time and at a lower cost. LPCXpresso builds on its Eclipse foundation by including many enhancements that simplify development with NXP LPC microcontrollers. It also features the industry-standard GNU toolchain, with the choice of a proprietary optimized C library or the standard Newlib library. The LPCXpresso IDE lets developers build an executable of any size with full code optimization.

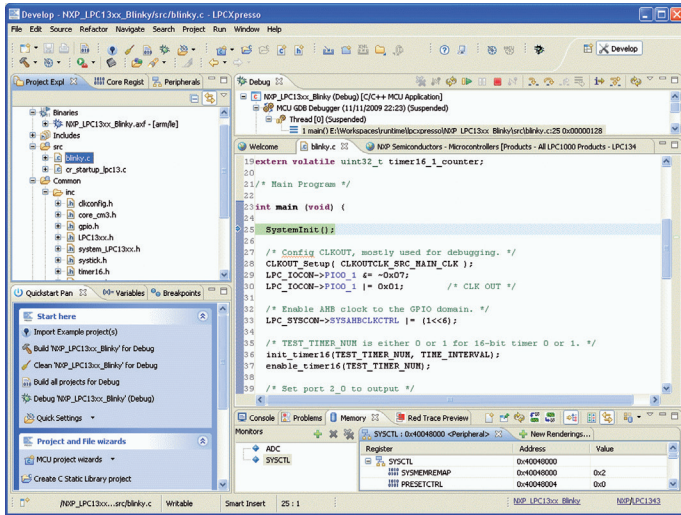
LPCXpresso 6 is a major update to NXP's MCU tools ecosystem. It reflects the NXP acquisition of Code Red Technologies, the makers of Red Suite.

Free and Pro Editions

The popular Free Edition of LPCXpresso now offers many features previously only available in the premium Red Suite product (including C++ support), and doubles the download limit to 256 KB.



The LPCXpresso IDE interface



The new Pro Edition of LPCXpresso provides unlimited code-size downloads and one year of email-based support, provided directly by NXP engineers. The Pro Edition is for those working on designs that require more code or who want access to expert support straight from NXP. Upgrading to the Pro Edition is easy and requires no additional downloads. Simply buy the Pro license and activate it in your LPCXpresso 6 install.

Target board

The LPCXpresso target board, jointly developed by NXP, and Embedded Artists (www.embeddedartists.com), includes an integrated Debug probe (LPC-Link or LPC-Link 2), so there's no need for a separate probe.

LPC-Link 2 JTAG/SWD debug probe

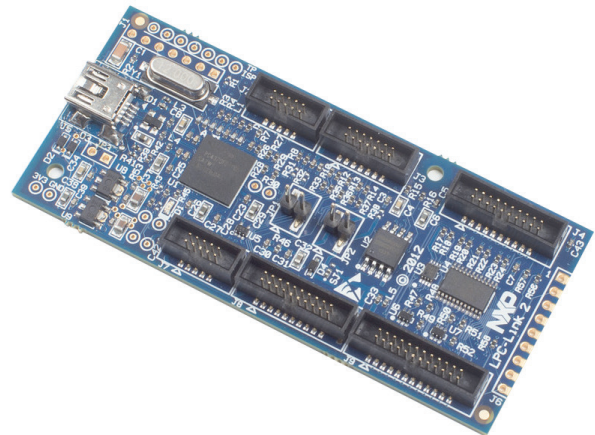
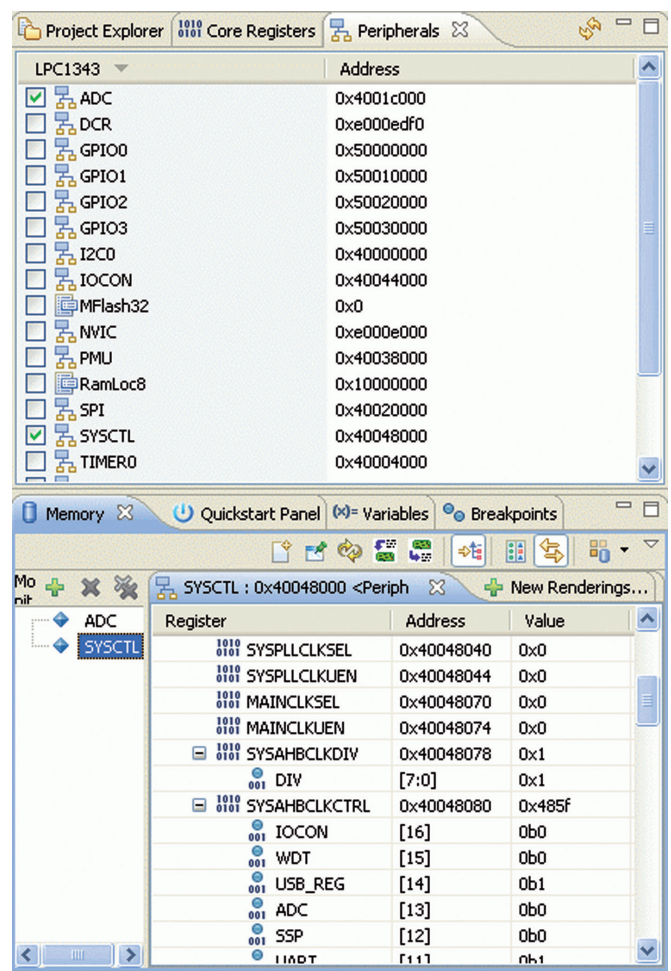
The LPC-Link 2 JTAG/SWD Debug probe brings exceptional value to the LPCXpresso tool chain since its debugging functions can be used with any other LPC evaluation board. That means engineers can use the same tools with other boards, including those used in final production. LPC-Link 2 provides a high-speed USB interface to the LPCXpresso IDE. LPC-Link2 is supported by many 3rd party toolchains and debuggers.

Supported LPC microcontrollers

The LPCXpresso platform supports all of NXP's LPC family of microcontrollers, including those based on ARM7, ARM9 and Cortex-M.



Peripheral window



LPC-Link2 JTAG/SWD debug probe

www.nxp.com/lpcxpresso

www.nxp.com

© 2013 NXP Semiconductors N.V.

All rights reserved. Reproduction in whole or in part is prohibited without the prior written consent of the copyright owner. The information presented in this document does not form part of any quotation or contract, is believed to be accurate and reliable and may be changed without notice. No liability will be accepted by the publisher for any consequence of its use. Publication thereof does not convey nor imply any license under patent- or other industrial or intellectual property rights.

Date of release: September 2013

Document order number: 9397 750 17472

Printed in the Netherlands