

# Emulator downloader Nu-Link programmer



*In-Circuit programming target chip*  
*Online/offline programming mode*  
*Backup flash data of target chip (If the target chip is not flash protected)*  
*Backup offline flash data of Nu-Link dongle (if offline data has been unprotected)*  
*Write software serials number (SN) to target chip*  
*Limit the maximum programming count*  
*Data encryption for online/offline programming*  
*Batch mode for online/offline programming*

## 2 Preparing for ICP Programming Tool

### 2.1 System Requirements

The hardware and software requirements for installing the ICP Programming Tool system are as follows:

PC/AT compatible machine with Pentium or higher CPU

XVGA(1024\*768) color monitor

At least 512M RAM for best performance

At least 20M free disk space

Windows 2000/XP/Vista/7

### 2.2 Hardware Installation

Step 1: Plug USB cable into the USB port of the ICP Programming Tool board.

Step 2: Connect the ICP Programming Tool board with ICE interface of DEV board.

### 2.3 Software Installation

Please run the installer package to install the software



Figure 2-1 Chip Series and Language Selection

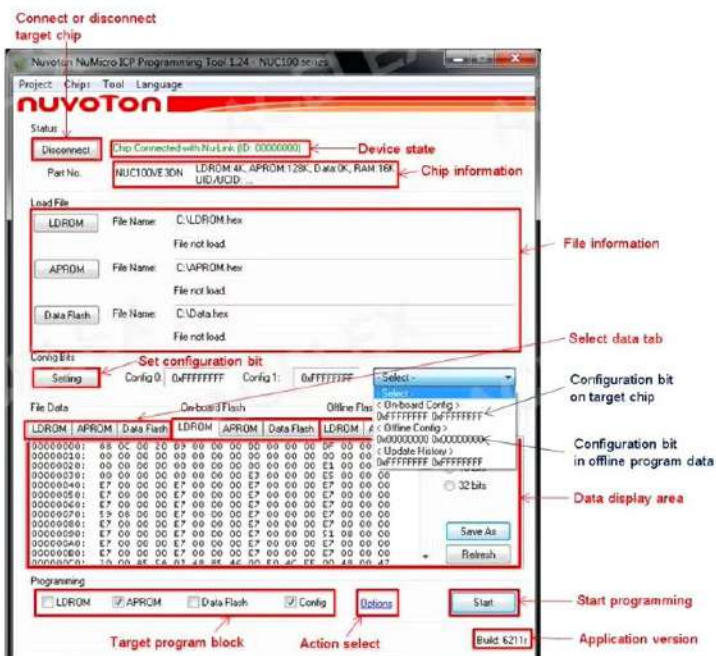


Figure 2-2 Overview of Main Window

Operation Modes of ICP Programming Tool and Nu-Link Dongle  
 This chapter describes operation modes of the ICP Programming Tool and Nu-Link dongle.

### 3.1 ICP Programming Tool Modes

The ICP tool supports "online" and "offline" programming mode.

#### 3.1.1 Online Programming Mode

If the "Offline programming mode" option in Figure 4-14 is unchecked, ICP Programming Tool will program in online programming mode. Click the "Start" button in Figure 2-2 to start to program target device immediately.

The target device must be connected to Nu-Link.

#### 3.1.2 Offline Programming Mode

If the "Offline programming mode" option in Figure 4-14 is checked, the ICP Programming Tool will program in offline programming mode. Click the "Start" button to save the file data into Nu-Link at first, no matter a target device is connected to Nu-Link or not.

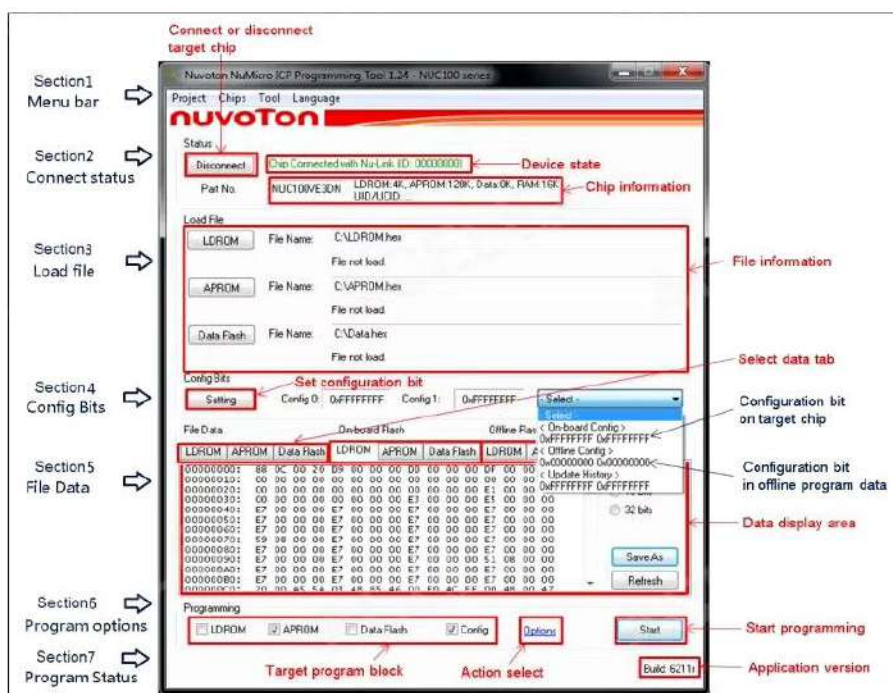


Figure 4-1 ICP Programming Tool User Interface