



Note:

Product Material:ABS

Surface Treatment:Smooth

Product Description:



×Product is suitable for the power module compartment, acquisition, transmitter, transducer transmitter signal isolation, etc.

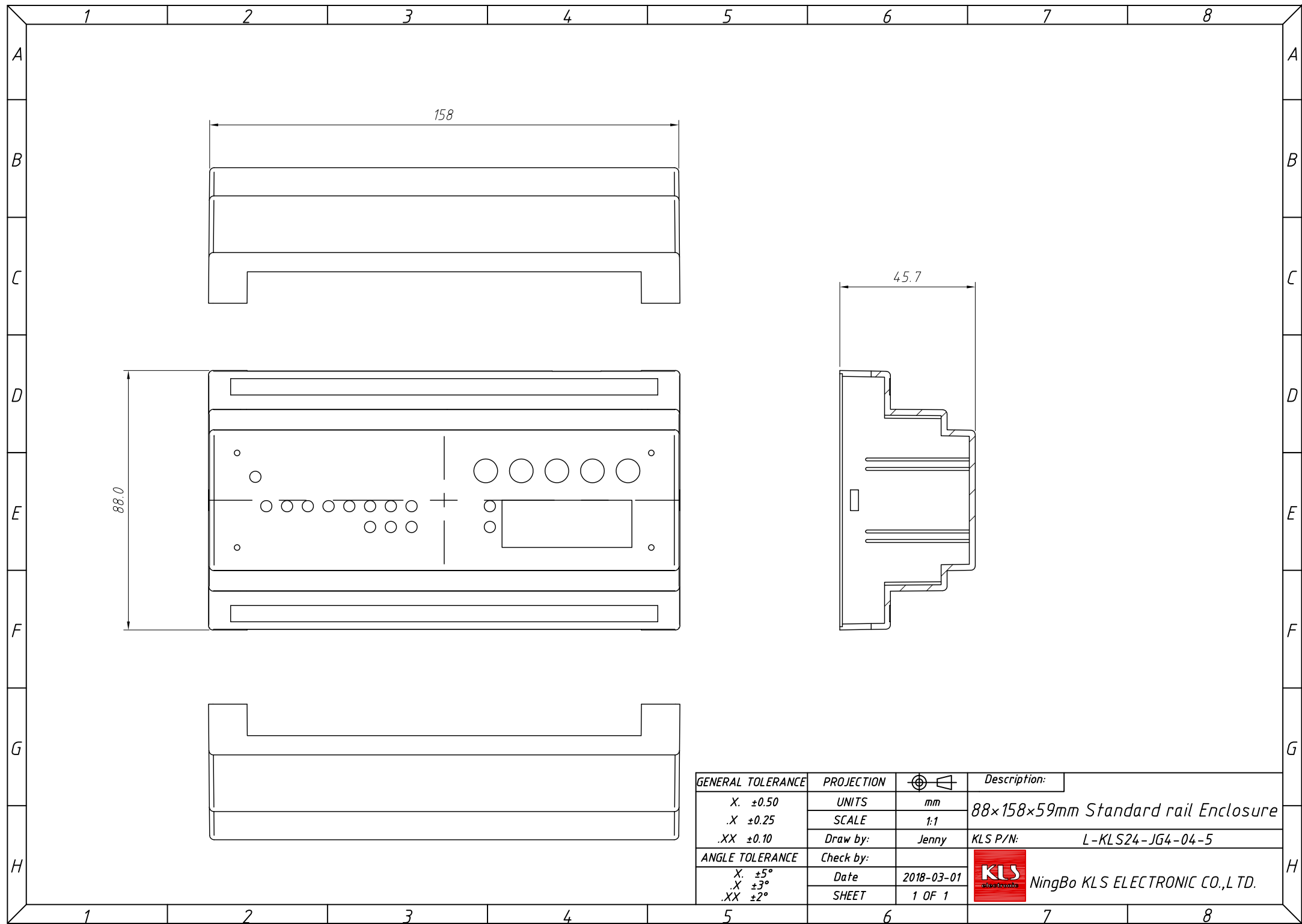
× Product Standard accessories: cover, base, red retainer 1



× Box body with the hook connection, tool-free installation

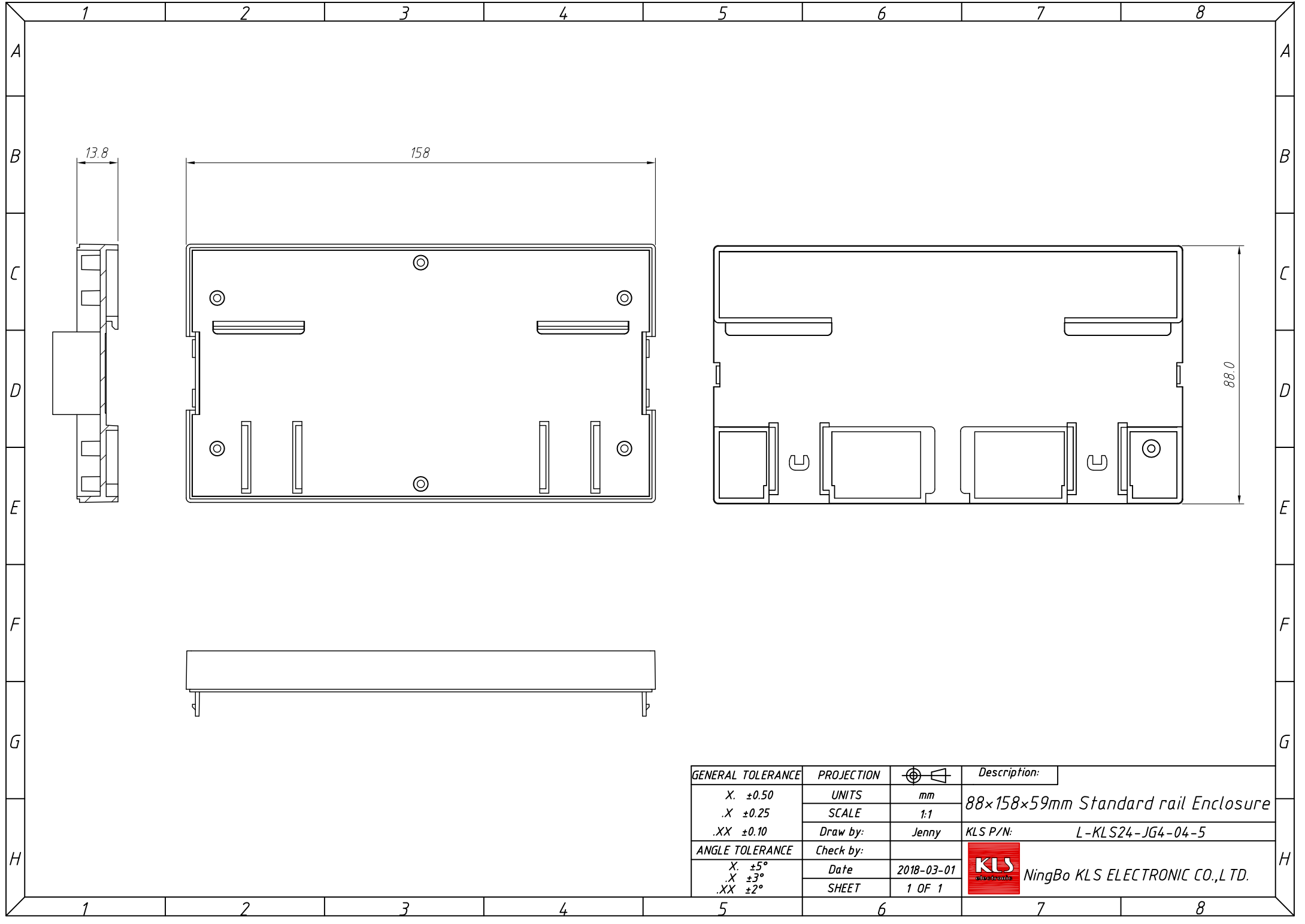
× Both sides of the product can be equipped with plug-in terminal spacing 5.08 unilateral 26, a total of 52

× Fast and simple standard 35 rail fixed

GENERAL TOLERANCE	PROJECTION		Description:
.X ±0.50	UNITS	mm	88×158×59mm Standard rail Enclosure
.X ±0.25	SCALE	1:1	
.XX ±0.10	Draw by:	Jenny	
ANGLE TOLERANCE	Check by:		KLS P/N: L-KLS24-JG4-04-5
.X ±5°	Date	2018-03-01	 NingBo KLS ELECTRONIC CO.,LTD.
.X ±3°	SHEET	1 OF 1	
.XX ±2°			



GENERAL TOLERANCE		PROJECTION		Description:
X.	±0.50	UNITS	mm	88×158×59mm Standard rail Enclosure
.X	±0.25	SCALE	1:1	
.XX	±0.10	Draw by:	Jenny	
ANGLE TOLERANCE		Check by:		KLS P/N: L-KLS24-JG4-04-5
X.	±5°	Date	2018-03-01	 NingBo KLS ELECTRONIC CO.,LTD.
.X	±3°	SHEET	1 OF 1	
.XX	±2°			



GENERAL TOLERANCE	PROJECTION		<i>Description:</i>
.X ±0.50	UNITS	mm	88×158×59mm Standard rail Enclosure
.X ±0.25	SCALE	1:1	
.XX ±0.10	Draw by:	Jenny	
ANGLE TOLERANCE	Check by:		KLS P/N: L-KLS24-JG4-04-5
.X ±5°	Date	2018-03-01	NingBo KLS ELECTRONIC CO.,L TD.
.X ±3°	SHEET	1 OF 1	
.XX ±2°			