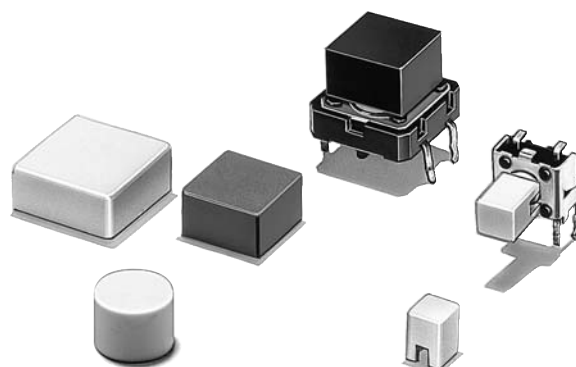


Key Top Designed Specially for Projected-plunger-type B3F, B3FS, and B3W Switches

■ Available in a wide range of colors and sizes.

RoHS Compliant



## Ordering Information

For B3F, B3FS, and B3W Switches

Color	6 × 6 mm Switches (B3F-1000, B3F-3000, B3F-6000, B3W-1000, B3FS)			12 × 12 mm Switches (B3F-4000, B3F-5000, B3W-4000)		
	4 × 4 mm Key Top	6 mm dia. Key Top	D-type Key Top	9 × 9 mm Key Top	12 × 12 mm Key Top	9.5-mm dia.
Ivory	B32-1000	B32-2000	B32-2100	B32-1200	B32-1300	B32-1600
Black	B32-1010	B32-2010	B32-2110	B32-1210	B32-1310	B32-1610
Orange	B32-1020	---	---	B32-1220	B32-1320	B32-1620
Yellow	B32-1030	---	---	B32-1230	B32-1330	B32-1630
Blue	B32-1040	---	---	B32-1240	B32-1340	---
White	B32-1060	---	---	B32-1260	B32-1360	---
Red	B32-1080	---	---	B32-1280	B32-1380	---

Note: Bulk Packed, 1000 pcs per bag. Order in multiple of the package quantity.

## Specifications

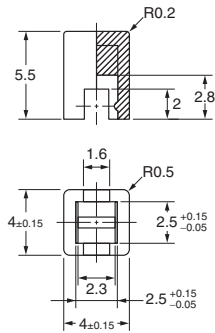
### ■ Characteristics

Ambient operating temperature	-25°C to +70°C at 60%RH max. (with no icing or condensation)
Ambient operating humidity	35% to 85% (at 5 to 35°C)

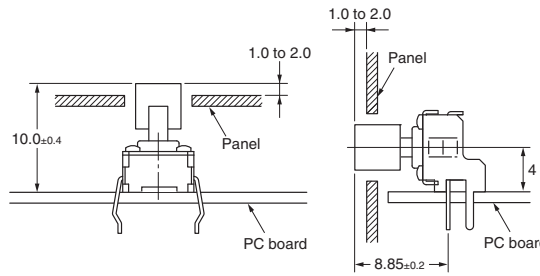
# Dimensions

**Note:** All units are in millimeters unless otherwise indicated. Unless otherwise specified, a tolerance of  $\pm 0.4$  mm applies to all dimensions.

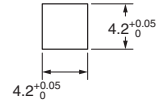
## B32-10□0



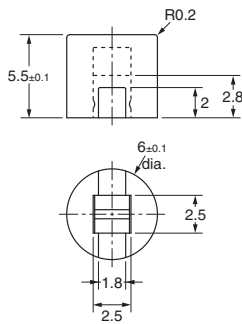
### Reference Dimensions



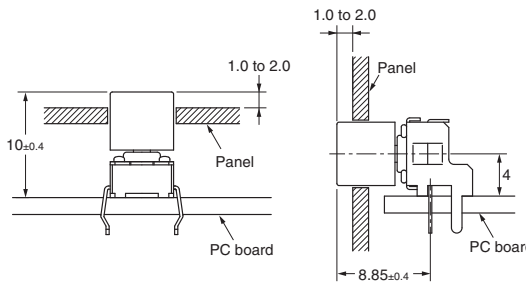
### Panel Cutout



## B32-2000 B32-2010



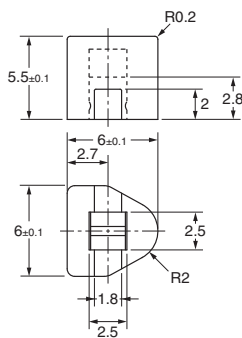
### Reference Dimensions



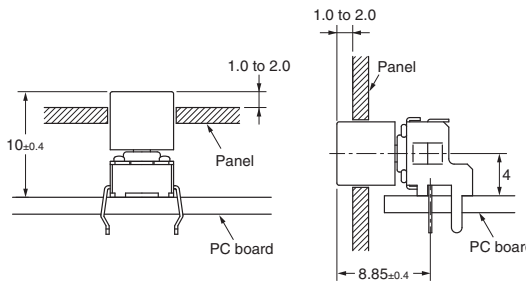
### Panel Cutout



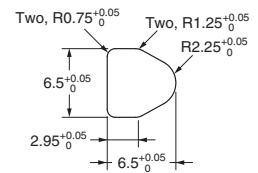
## B32-2100 B32-2110



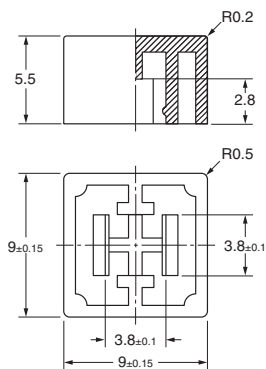
### Reference Dimensions



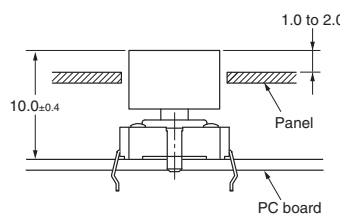
### Panel Cutout



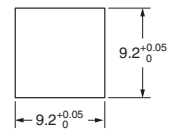
## B32-12□0



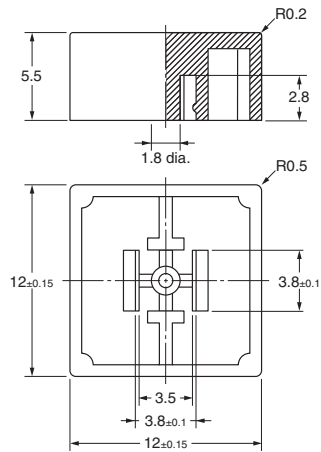
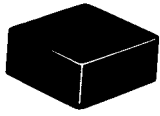
### Reference Dimensions



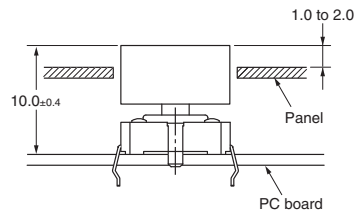
### Panel Cutout



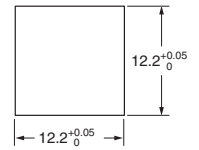
**B32-13□0**



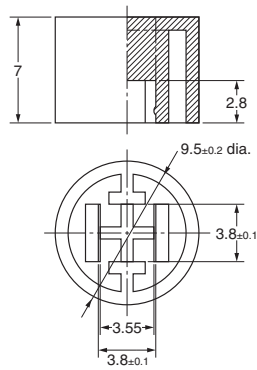
**Reference Dimensions**



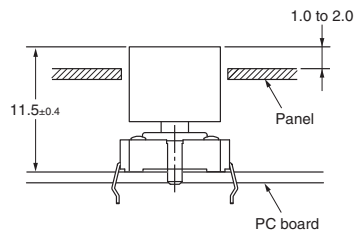
**Panel Cutout**



**B32-16□0**



**Reference Dimensions**



**Panel Cutout**



## Precautions

Mount the Key Top on to the Switch after soldering, otherwise the Key Top may be deformed by the soldering heat.

**ALL DIMENSIONS SHOWN ARE IN MILLIMETERS.**  
 To convert millimeters into inches, multiply by 0.03937. To convert grams into ounces, multiply by 0.03527.