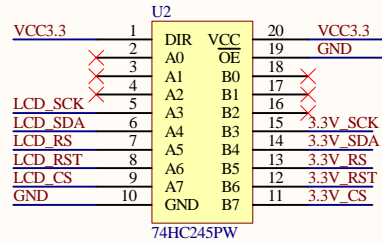
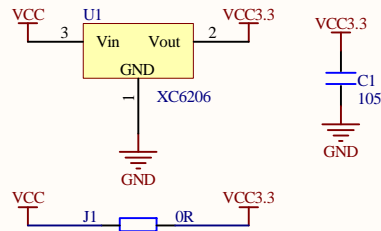


液晶屏14Pin接口



电平转换电路

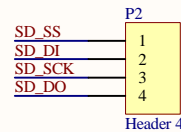


供电电源选择：

外部VCC输入5V时，J1断开
外部VCC输入3.3V时，J1短接

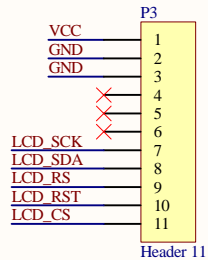


背光限流电路

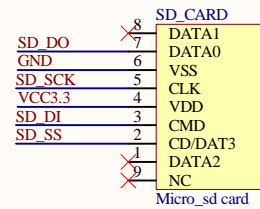


模块扩展输出接口

扩展输出排针默认不焊接



模块11Pin排针接口



SD卡接口电路

深圳市全动电子技术有限公司

ShenZhen QDtech Co.,LTD

www.qdfft.com

因为专注，所以专业

Title		
Size	Number	Revision
A4		
Date:	2015/6/11	Sheet of
File:	E:\学习\1\Sch_1.8寸Arduino模块原理图.SchDocn By:	

Features

- Directly inserted into Arduino(UNO/Mega, etc.)no wiring
- OnBoard level conversion chip for 5V/3.3V MCU
- Compatible with 3.3/5V operation voltage level
- With SD Card Socket
- SPI Serial bus only need 4 IO at least
- Compatible with UTFT Library for arduino.

Specifications

Item	Description
Display Type	1.77 inch a-si TFT LCD Module
Display Resolution	128XRGBX160 Pixels
Back light	2 chip white LED
Control IC	ST7735
Interface	4 wires Serial
PCB Module size	38.3mmX62.48mmX1.6mm
Module weight	80g

Electrical Characteristics

Specification	Min	Type	Max	Unit
Power Voltage(VDD/VCC)	3.3	5	5.5	VDC
IO Pins Voltage	MCU Voltage = 3.3V	3	3.3	V
	MCU Voltage = 5V	4.5	5.5	
BackLight Control	For PWM Mode	-	80	KHZ
	For IO Mode	3	3.3	5.5
Current Consumption	-	30	-	mA

11Pin LCD Interface pinMap

NO	Pin Label	Decription
1	VCC	Power Input(3.3V/5V)
2	GND	Ground
3	GND	Ground
4	NC	No Connect
5	NC	No Connect
6	NC	No Connect
7	CLK	Serial Clock input
8	SDA	Serial Data input
9	RS	Cammand/Data Selection(0:cammand;1:Data)
10	RST	LCD Reset(Low level Enable)
11	CS	ChipEnable(Low level Active)

Extend SDCard-Interface pinMap

NO	Pin Label	Decription
1	SD_CS	SDCard Chip Seselect
2	SD_MOSI	SPI Bus Data-input MOSI
3	SD_CLK	SPI Bus Clock
4	SD_MISO	SPI Bus Data-Output MISO

Revision History

Rev.	Description	Release date
V1.0	Initial version	2013/2/25
V1.1	Support Arduino	2015/3/15