

Boom reflector for Acriche AX3221 & P7 LEDs



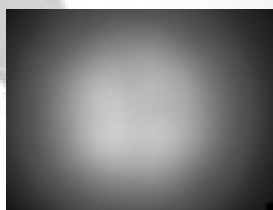
- Specially designed for Seoul Semiconductor's Acriche series of LEDs. Works very well with Seoul Semiconductor's P7 LED too.
- Special care taken to make a uniform white or warm white illumination. Lenses work well with other colors, too.
- Lens material optical grade metallized ABS. Allows use of high current and temperature conditions
- Best available optical efficiency, up to 90%.

LENS TYPES

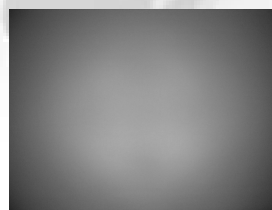
NAME	ORDERING CODE	FWHM Angle
BOOM-S (P7)	BOOM-P7-S (n. C10588)	±9°
BOOM-S (acriche)	BOOM-P7-S (n. C10588)	±12°
BOOM-M (P7)	BOOM-P7-M (n. C10589)	±19°
BOOM-M (acriche)	BOOM-P7-M (n. C10589)	±17.8°
BOOM-W (P7)	BOOM-P7-W (n. C10590)	±34°
BOOM-W (acriche)	BOOM-P7-W (n. C10590)	±28.5°



BOOM-S (P7)



BOOM-M (P7)



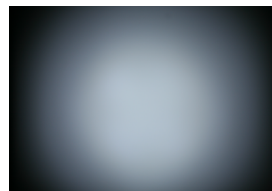
BOOM-W (P7)



BOOM-S (ACRICHE)



BOOM-M (ACRICHE)

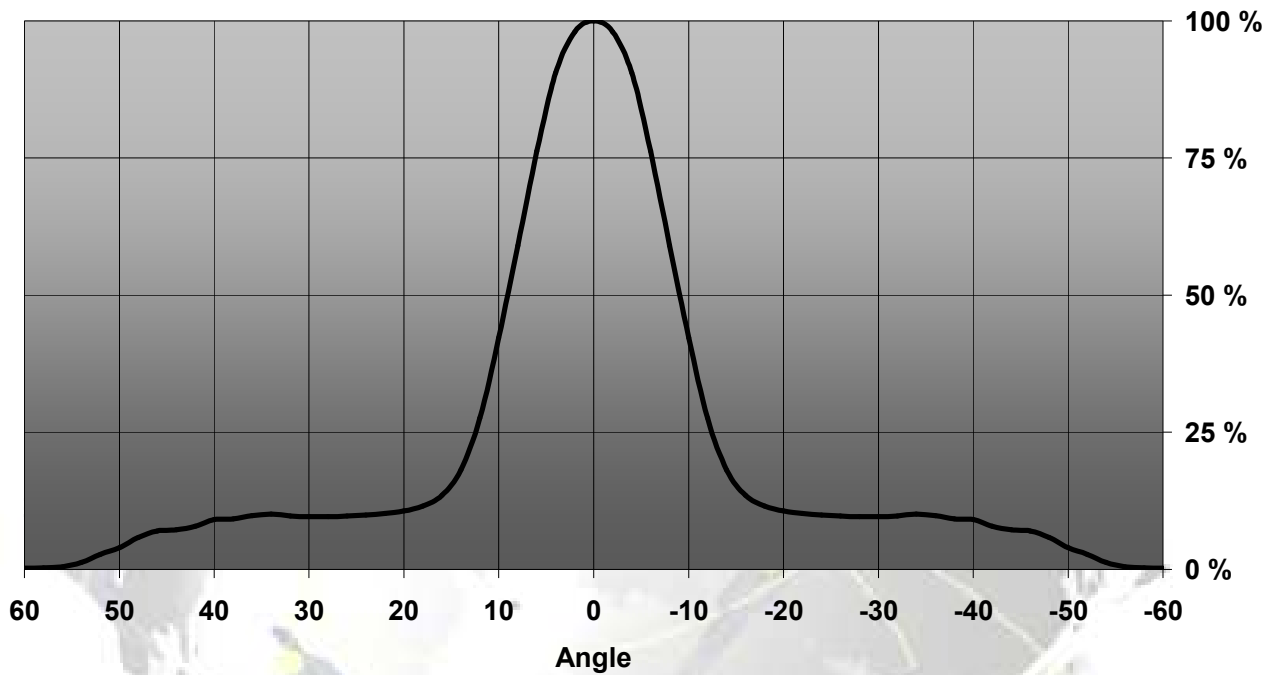


BOOM-W (ACRICHE)

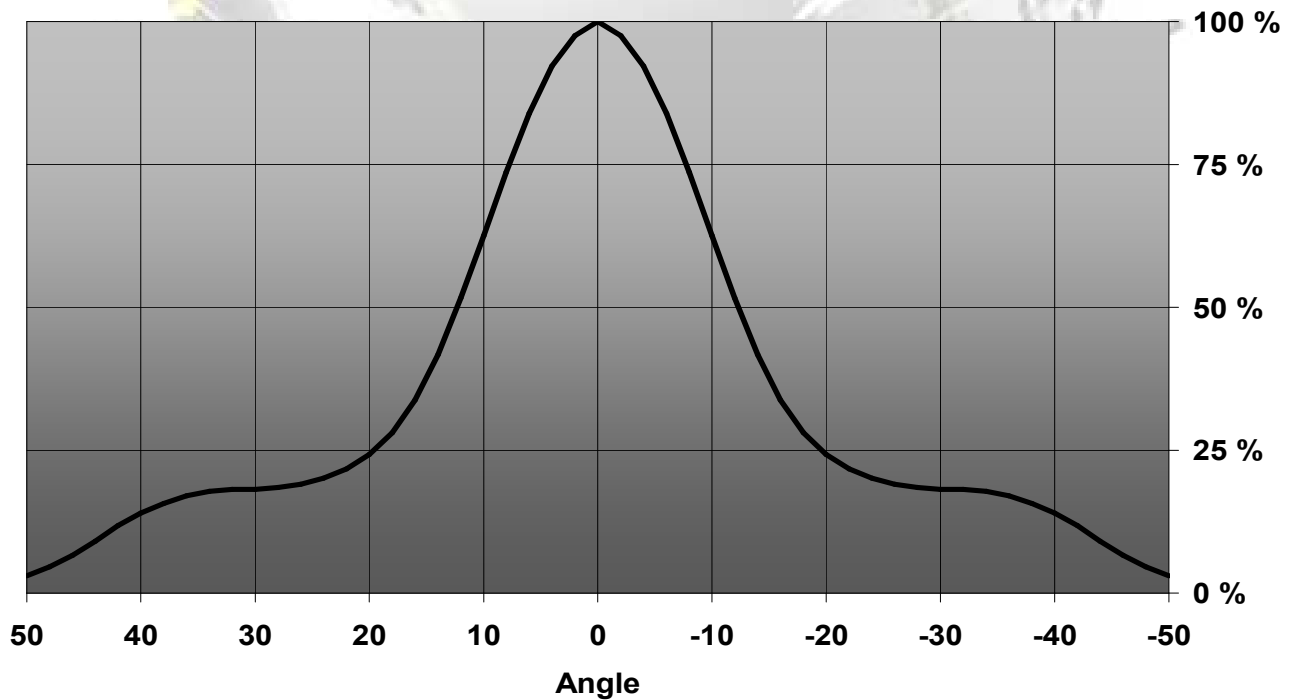
© Ledil Oy – PRELIMINARY - Subject to change without prior notice

MEASUREMENT DATA

Relative Intensity of BOOM-P7-S

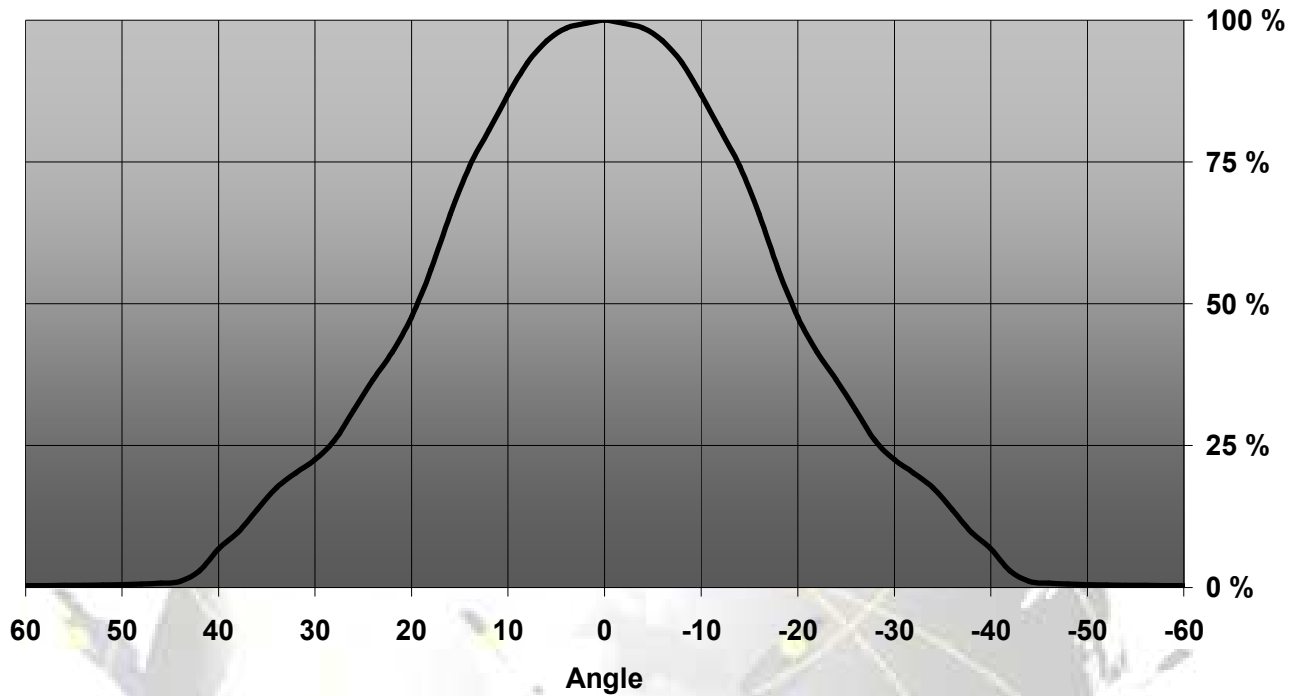


Relative Intensity of BOOM-S (Acriche)

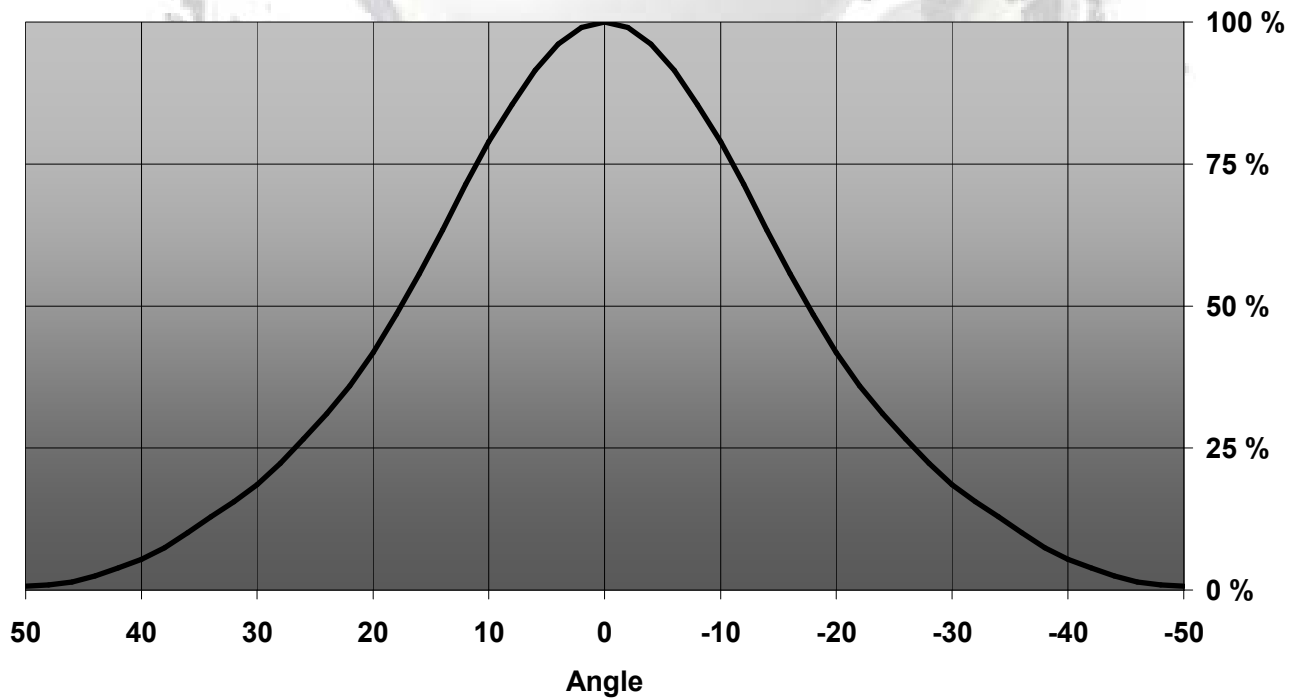


© Ledil Oy - PRELIMINARY - Subject to change without prior notice

Relative Intensity of BOOM-P7-M

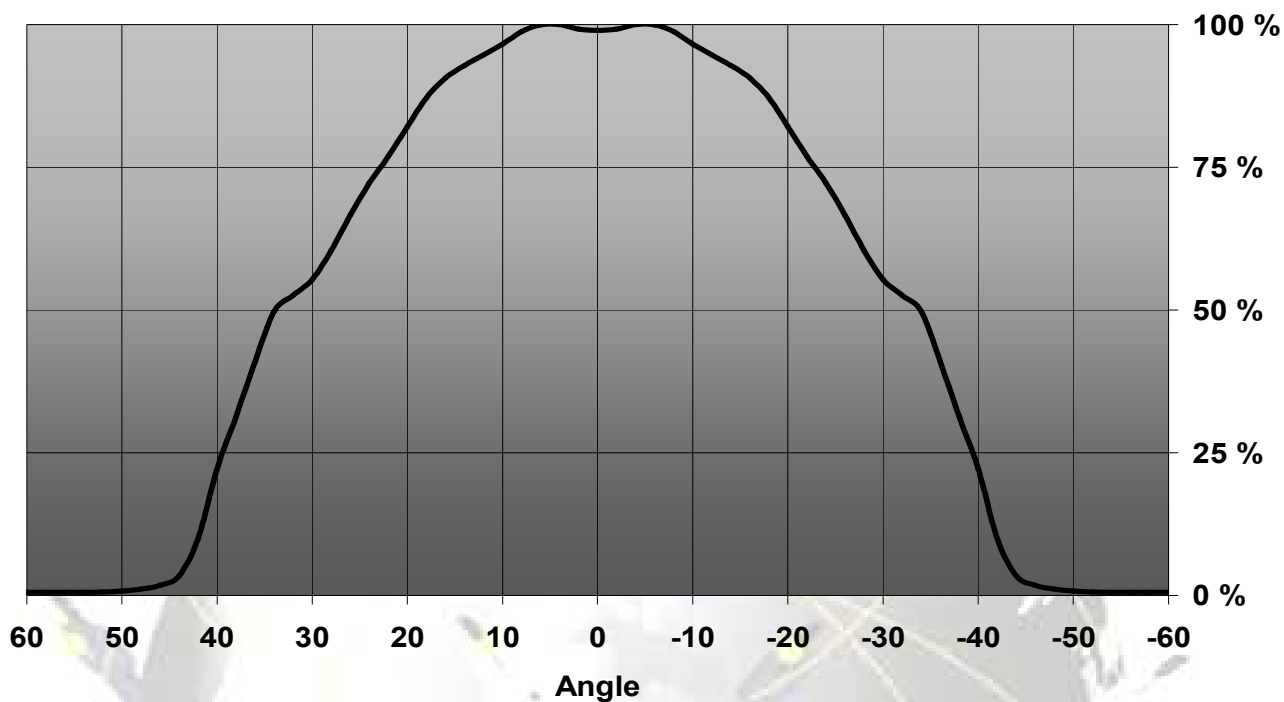


Relative Intensity of BOOM-M (Acriche)

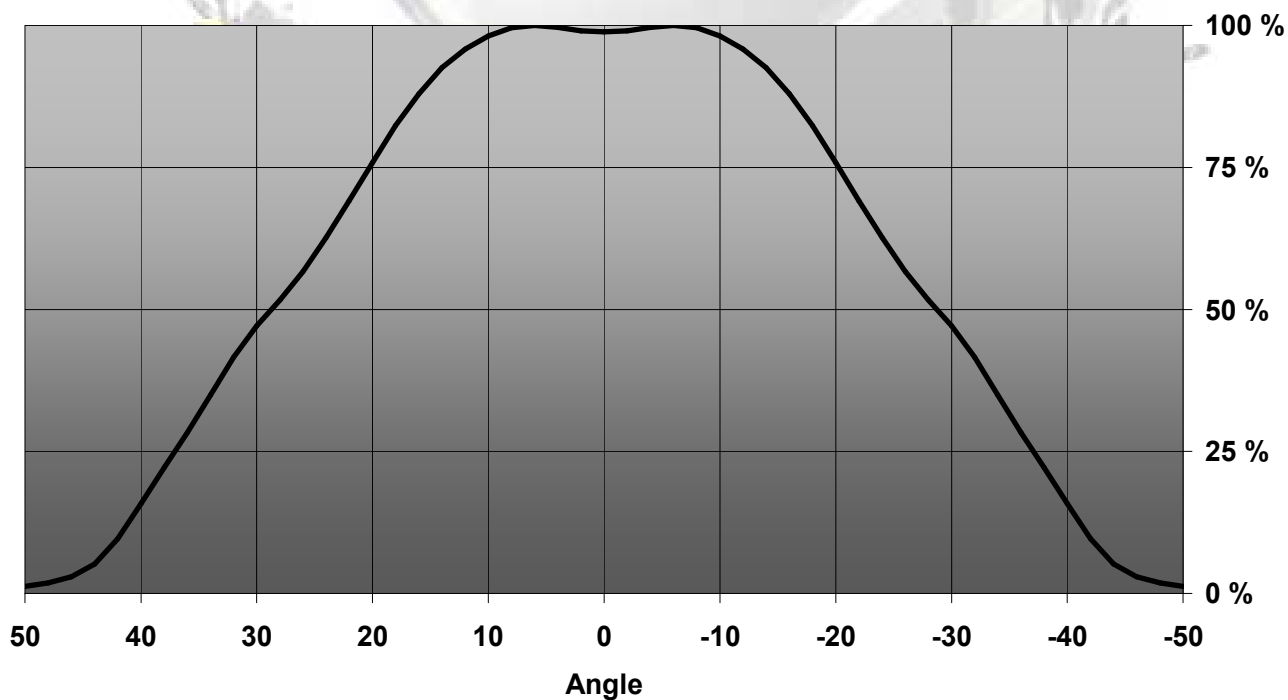


© Ledil Oy – PRELIMINARY - Subject to change without prior notice

Relative Intensity of BOOM-P7-W

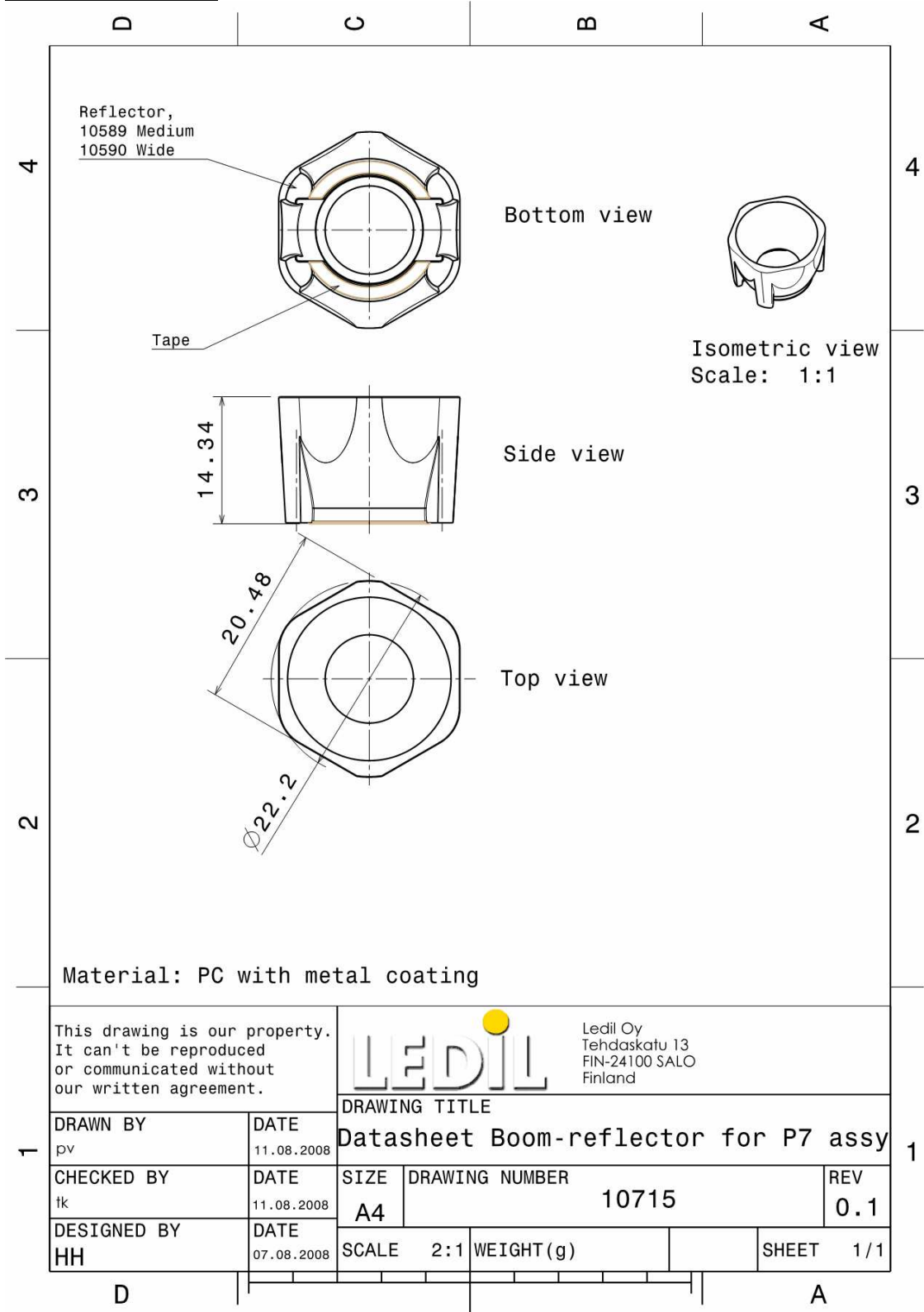


Relative Intensity of BOOM-W (Acriche)



© Ledil Oy – PRELIMINARY - Subject to change without prior notice

DRAWINGS



© Ledil Oy - PRELIMINARY - Subject to change without prior notice